

D-Link[®]
FOR BUSINESS



TOTAL BUSINESS SURVEILLANCE SOLUTIONS

PRODUCT GUIDE

Video Surveillance



The security of your business is at risk if there is no surveillance or monitoring system in place to protect your assets. Choosing to implement video surveillance brings many advantages, not least of which is that in most cases you can utilise your existing data network infrastructure to maximise investment. Digital video surveillance not only provides all of the superior functionality of an effective analogue CCTV offering, but adds several key benefits, such as increased accessibility, real-time alerts, unlimited video storage, secure image distribution and superior cost benefits, not to mention, of course, the peace of mind that comes with knowing your business premises are being monitored 24/7. Products under this category include IP cameras, network video recorders and video encoders. Many of D-Link's IP cameras are PoE-equipped, making installation simpler and more cost-effective when used in conjunction with PoE-capable switches, and there are plenty in the range that are wireless, again simplifying location positioning.



H.265 Video Compression

Provides high quality video with less bandwidth needed, less disk space required for recording. Helps to save storage cost and reduce bandwidth usage. The new H.265 brings huge bandwidth savings of approximate 30-50% over H.264 encoded content with similar quality.



H.264



H.265

PoE (Power Over Ethernet)

Power & data transmission via single UTP cable. PoE allows easy installation in a variety of locations without the need for supplemental power cabling.

WDR (Wide Dynamic Range)

Neutralizes imperfect lighting, provide clear images with the right amount of contrast even for backlit subjects.



Without WDR



With WDR

Outdoor IP Rating

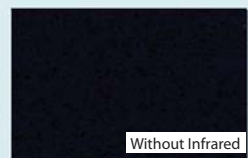
D-Link Outdoor IP Cameras come with water & dust-proof housing for outdoor deployments.

Infrared-cut Removable (ICR) Filter & Infrared LED illuminator

Provides 24/7 Day & Night monitoring, even in low light condition.



With Infrared



Without Infrared



Choosing your Network Cameras

D-Link deliver a complete line of full-featured Network Cameras offering the surveillance capabilities your business need. They're designed with the latest technology, from Power over Ethernet (PoE or PoE+), on-board video processing, motion and tamper detection*, high definition and multi-megapixel resolution, ICR for recording in any light conditions, H.265/H.264/MPEG-4/MJPEG compression, pan/tilt/zoom (PTZ) and more. All for less than competitive solutions — so you can do more with your security budget.



FISHEYE CAMERAS

Available in multi-megapixel resolutions, D-Link fisheye cameras can be mounted on ceiling for full 360 degree of coverage. It can also be placed on a wall for 180 degree coverage. The distortion correction gives panoramic view or a normal corrected image that can pan across easily.



BULLET CAMERAS

Bullet cameras are a variation of the box camera built into a sealed, weatherproof enclosure. They can be used indoors or outdoors without the need for additional hardware (a wall mount is included).

Bullet cameras are often used because of their all-in-one design and attractive pricing. D-Link bullet cameras are available in HD / Full HD resolution, offer day & night functionality and integrated infrared illumination.



INDOOR DOME CAMERAS

D-Link indoor dome cameras offer an aesthetic design wherein the camera, lens and cabling are hidden and protected inside of a domed enclosure.

D-Link indoor dome cameras are available in HD / Full HD resolution, offer day / night functionality, integrated IR illumination, two-way audio* and integrated memory card storage*.



OUTDOOR DOME CAMERAS

D-Link outdoor dome cameras offer an aesthetic design wherein the camera, lens and cabling are hidden and protected inside of a domed enclosure. Built with a rugged vandal-proof and weatherproof design and extended temperature range operation, D-Link outdoor dome cameras are available in HD / Full HD and multi-megapixel resolution, offer day / night functionality, integrated IR illumination, two-way audio* and integrated memory card storage*.

Panoramic Fisheye 360° Camera

D-Link Fisheye Camera is a particular ultra-wide-angle lens camera, with its almost 180° horizontal view angle, which can realize 360° surveillance without blind angle. Fisheye lens is designed just like the fish eyes, where the diameter of front lens is short and parabolic out. Based on usual experience of wide-angle lens, we find that, the shorter the focal length, the more severe the image warping. The same applies to Fisheye lens. To realize panoramic ultra-wide-angle, the image warping is the most severe.

D-Link Fisheye is designed with UFO appearance, elaborate and fashionable.

MODEL	DCS-F4626
CAMERA	
Image Sensor	1/1.8" CMOS
Megapixel	6
Day & Night	ICR
Shutter Speed	1/5-1/50000
Auto Iris	Fixed
FOV	360°
Wide Dynamic Range	dWDR
Digital Noise Reduction	2D/3D
Lens	1.6mm
IR Range	10m
IMAGE	
Max.Resolution	3072x2048/15fps
ROI	—
Defog	—
Alarm Trigger	✓
INTERFACE	
Audio	1ch Audio In/Out, Built-in Microphone
Alarm I/O	1ch Alarm In/Out
Edge Storage	Max 64GB
GENERAL	
Power Supply	AC24V/DC12V/POE
Operating Temperature	-40°C ~ 60°C
Ingress Protection	IP66
Product Dimensions	160x46.8mm
Product Weight	780g

DCS-F4515 5MP Full HD Fish-Eye Panoramic Network Camera



- 1/2.5" Progressive Scan CMOS
- 5MP(2560*1920) Fish-Eye Panoramic cameras
- Triple Streams
- Low bitrate ,Excellent low light performance
- WDR,3D DNR, ROI, Defog, HLC, DIS
- Smart IR Up to 15m

DCS-F8612 12MP Full HD Fish-Eye Panoramic Network Camera



- 1/1.7" Progressive Scan CMOS
- 20fps@12MP(4000*3000) Anti-Distortion Fish-Eye
- Triple Streams
- Unique De-warping Image
- Image distortion correction
- Support Camera & Software De-warping
- Low bitrate ,Excellent low light performance
- dWDR,3D DNR
- ROI, Defog, HLC, Corridor mode, DIS
- IP66

DCS-F6632P 32MP Full HD 360° Edge Stitching Panoramic Network Camera



- Four 1/1.8" 32MP Progressive Scan CMOS
- H.265/H.264 triple-stream encoding
- Edge stitching 25fps@7680x4320
- Support 360-degree panoramic view
- Unique De-warping Image
- Support Camera & Software De-warping
- Smart detection
- ROI, Defog, HLC, BLC, AWB, AGC, EIS, IVS
- IP66



MODEL	DCS-F4515	DCS-F8612	DCS-F6632P
CAMERA TYPE	Fisheye	Fisheye	Multi-Sensor Camera
Image Sensor Type	1/2.5" CMOS	1/1.7" CMOS	Four 1/1.8" CMOS
Connectivity	IP	IP	IP
Megapixel	5MP	12MP	32MP
Wide Dynamic Range (WDR)	WDR	WDR	WDR
Noise Reduction	2D/3D	2D/3D	2D/3D
Lens, Focal length	Fixed, 1.5mm	Fixed, 1.83mm	Fixed, 2.2mm
F-Number	F1.2	F1.2	F2.2
Minimum Illumination (Lux)	Color :0.1Lux@(F1.2,AGC ON);B/W: 0 Lux@(IR LED ON)	Color :0.009Lux@(F1.2,AGC ON);B/W: 0 Lux@(IR LED ON)	Color:0.009Lux@(F1.2,AGC ON);B/W:0Lux@(IR LED ON)
Angle of View	360°	360°	360°
IR Wavelength	850nm	850nm	-
Day & Night (Built-in IR)	yes, up to 15m	yes, up to 15m	-
Video	H.265/H.264/MJPEG	H.265/H.264/MJPEG	H.265/H.264/MJPEG
Maximum Video Resolution (16:9)	2560×1920, 25fps	4000×3000, 20fps	7680×4320, 25fps
Bit Rate (CBR/VBR)	Main stream:500Kbps-12Mbps ;Sub stream 100Kbps-6Mbps	Main stream:500Kbps-16Mbps-Sub stream 100Kbps-8Mbps	Main Stream: 7680×4320: 2048Kbps-16384Kbps
Audio Compression	G.711_A G711_U_RAW_PCM	Sub Stream: 1024Kbps~8Mbps	Sub Stream: 1024Kbps~8Mbps
Stream	Stream1 : 2560×1920, 2048×1536, 1280×960@25fps Stream 2 : D1/VGA/QVGA@25fps;	Stream1 : 4000×3000@20fps , 4096×2160/3840×2160/3000×3000/2560×250/1920×1080@25fps Stream 2 : 1280×960/D1/720×720@20fps;	Stream1: 5760×3240/4096×2160/3840×2160/1920×1080 @25fps/30fps Stream2: 3840×2160/1080P/720P/D1 @25fps/30fps Stream3: VGA/CI/ QVGA
Network Protocols	IPv4/IPv6, 802.1x, HTTP, HTTPS, TCP/IP, UDP/IP, RTSP, DHCP, NTP, RTP/RTCP, PPPoE, SMTP, DNS, UPnP, FTP, ARP, SNMP	IPv4/IPv6, 802.1x, HTTP, HTTPS, TCP/IP, UDP/IP, RTSP, DHCP, NTP, RTP/RTCP, PPPoE, SMTP, DNS, UPnP, FTP, ARP, SNMP	IPv4/IPv6, 802.1x, HTTP, HTTPS, TCP/IP, UDP/IP, RTSP, DHCP, NTP, RTP/RTCP, PPPoE, SMTP, DNS, UPnP, FTP, ARP, SNMP
Alarm Trigger	Perimeter ,Single Virtual Fences ,Double Virtual Fences ,Loiter ,Multi Loiter ,Object Left ,Object Removed, Abnormal Speed ,Converse, Illegal Parking ,Signal Bad ,Motion Detection,Network Disconnect,Disk Alarm,I/O Alarm	Perimeter ,Single Virtual Fences ,Double Virtual Fences ,Loiter ,Multi Loiter ,Object Left ,Object Removed, Abnormal Speed ,Converse, Illegal Parking ,Signal Bad ,Motion Detection,Network Disconnect,Disk Alarm,I/O Alarm	Perimeter, Single Virtual Fences, Double Virtual Fences, Loiter, Multi Loiter, Object Left, Object Removed, Abnormal Speed, Converse, Illegal Parking, Signal Bad, Audio Anomaly Detection
RTSP Video	Standard RFC2326, Support QuickTime / VLC Player.	Standard RFC2326, Support QuickTime / VLC Player.	-
System Compatibility	ONVIF	ONVIF	ONVIF
Ethernet	Ethernet (10/100 Base-T) RJ-45 Connector	Ethernet (10/100 Base-T) RJ-45 Connector	Ethernet (10/100 Base-T) RJ-45 Connector
Connectivity Memory Card Slot	Micro SD up to 128GB	Micro SD up to 128GB	Micro SD up to 128GB
Connectivity Power: 802.3af PoE	YES	YES	YES
Power Supply	DC12V/POE; 5W No IR, 8W IR	DC12V/POE (AC24V optional); 5W No IR, 8W IR	DC12V/POE+
Operating Temperature	-30°C ~ 50°C	-40°C ~ 60°C	-40°C ~ 60°C
Physical Specs	φ125×44.8mm, 424g	φ160*46.8mm, 700g	112.2×112.2×90mm, 1.25KG
IP Rating	-	IP66	IP66

Dome Network Cameras

D-Link's high-performance Indoor/Outdoor Dome Network Cameras provide the perfect video surveillance solution for a whole host of business environments. They are equipped with progressive CMOS technology to deliver exceptional picture quality, and all are PoE-enabled for simplified low-cost installation. Additional features such as long-distance night vision, zoom and motion detection/alert make them perfect for the perimeter areas of buildings, alleyways or other dimly lit areas. This series of cameras are all built to IP66 standard, so they're weather-proof and suitable for outdoor environments.

DCS-F4612 2MP Full HD Day & Night Indoor / Outdoor Fixed Dome PoE Network Camera



- 1/2.7" Progressive Scan CMOS
- 3.6mm
- 25fps/30fps@2MP(1920*1080)
- Triple Streams
- Smart IR Up to 20m
- Low bitrate ,Excellent low light performance
- WDR,3D DNR
- ROI, Defog, HLC, Corridor mode, DIS
- IP66

DCS-F4222 2MP Full HD motorized Lens (2.8-8mm) Day & Night Indoor/Outdoor Network Camera



- 1/2.7" Progressive Scan CMOS
- 2.8-8mm motorized lens
- 25fps/30fps@2MP(1920*1080)
- Triple Streams
- Smart IR Up to 20m
- Low bitrate ,Excellent low light performance
- WDR,3D DNR
- ROI, Defog, HLC, Corridor mode, DIS
- IP66

DCS-F4604 4MP Full HD Fixed Lens Day & Night Indoor/Outdoor Vandal Proof Network Camera



- 1/3" Progressive Scan CMOS
- 2.8mm
- 25fps/30fps@4MP(2592*1520)
- Triple Streams
- Smart IR Up to 30m
- Low bitrate ,Excellent low light performance
- WDR,3D DNR
- ROI, Defog, HLC, Corridor mode, DIS
- IP66,IK10

DCS-F4334 4MP Full HD Fixed Lens Day & Night Indoor / Outdoor Mini-Dome Network Camera



- 1/3" Progressive Scan CMOS
- 2.8mm
- 25fps/30fps@4MP(2592*1520)
- Triple Streams
- Smart IR Up to 10m
- Low bitrate ,Excellent low light performance
- WDR,3D DNR
- ROI, Defog, HLC, Corridor mode, DIS
- IP67

DCS-F4614 4MP Full HD Motorized Lens (2.8~8mm) Indoor/ Outdoor Network Camera



- 1/3" Progressive Scan CMOS
- Motorized lens 2.8~8mm
- 25fps/30fps@4MP(2592*1520)
- Triple Streams
- Smart IR Up to 30m
- Low bitrate ,Excellent low light performance
- WDR,3D DNR
- ROI, Defog, HLC, Corridor mode, DIS
- IP67

DCS-F4624 2MP Full HD Day & Night Indoor / Outdoor Fixed Dome PoE Network Camera



- 1/3" Progressive Scan CMOS
- Motorized lens 2.7~12mm
- 25fps/30fps@4MP(2592*1520)
- Triple Streams
- Smart IR Up to 30m
- Low bitrate ,Excellent low light performance
- WDR,3D DNR
- ROI, Defog, HLC, Corridor mode, DIS
- IP67,IK10



MODEL	DCS-F4612	DCS-F4614	DCS-F4624	DCS-F4604	DCS-F4222	DCS-F4334
Camera Type	Dome	Dome	Dome	Dome	Dome	Dome
Image Sensor Type	1/2.7" CMOS	1/3" CMOS	1/3" CMOS	1/3" CMOS	1/2.7" CMOS	1/3" CMOS
Connectivity	IP	IP	IP	IP	IP	IP
Megapixel	2MP	4MP	4MP	4MP	2MP	4MP
Wide Dynamic Range (WDR)	WDR	WDR	WDR	WDR	WDR	WDR
Noise Reduction	2D/3D	2D/3D	2D/3D	2D/3D	2D/3D	2D/3D
Lens, Focal length	Fixed, 3.6mm	Motorized Lens, 2.8-8mm	Motorized Lens, 2.7-12.0mm	2.8mm	motorized lens 2.8-8mm	Fixed, 2.8mm
F-Number	F1.2	F1.2	F1.2	F1.2	F1.2	F1.2
Minimum Illumination (Lux)	Colour: 0.2Lux, B/W:0Lux (IR ON)	Colour: 0.01Lux, B/W:0Lux (IR ON)	Colour: 0.01Lux, B/W:0Lux (IR ON)	Colour: 0.01Lux, B/W:0Lux (IR ON)	Colour: 0.01Lux, B/W:0Lux (IR ON)	Colour: 0.01Lux, B/W:0Lux (IR ON)
Angle of View	85°	100° - 45°	95° - 35°	95° - 35°	85°	85°
IR Wavelength	850nm	850nm	850nm	850nm	850nm	850nm
Day & Night (Built-in IR)	yes, up to 20m	yes, up to 30m	yes, up to 30m	yes, up to 30m	yes, up to 20m	yes, up to 10m
Video	H.265/H.264/MJPEG	H.265/H.264/MJPEG	H.265/H.264/MJPEG	H.265/H.264/MJPEG	H.265/H.264/MJPEG	H.265/H.264/MJPEG
Maximum Video Resolution (16:9)	1920x1080, 30fps	2592x1520, 30fps	2592x1520, 30fps	2592x1520, 30fps	2592x1520, 30fps	2592x1520, 30fps
Bit Rate (CBR/VBR)	Main stream: 1080P: 500Kbps-12Mbps, 720P: 200Kbps-8Mbps; Sub stream 100kb-6000kb	Main stream:500kb-12000kb ;Sub stream 100kb-6000kb	Main stream:500kb-12000kb ;Sub stream 100kb-6000kb	Main stream:500kb-12000kb ;Sub stream 100kb-6000kb	Main stream:500kb-12000kb ;Sub stream 100kb-6000kb	Main stream:500kb - 12000kb ;Sub stream 100kb-6000kb
Audio Compression	-	G.711_RAW_PCM	G.711_RAW_PCM	-	-	G.711_RAW_PCM
Stream	Stream 1 : 1920x1080/1280x720 Stream 2 : D1 to QVGA Stream 3 : 1920x1080/1280x720/D1/VGA/640 x 360/CIF/QVGA	Stream 1 : 2592x1520/2560x1440 /2304x1296/1920x1080 Stream 2 : D1 to QVGA	Stream1: 2592x1520/2560x1440 /2304x1296/1920x1080 Stream 2 : D1 to QVGA	Stream1 : 2592x1520/2560x1440 /2304x1296/1920x1080 Stream 2 : D1 to QVGA	Stream1: 2592x1520/2560x1440 /2304x1296/1920x1080 Stream 2 : D1 to QVGA	Stream1: 2592x1520/2560x1440 /2304x1296/1920x1080 Stream 2 : D1 to QVGA
Network Protocols	IPv4/IPv6, 802.1x, HTTP, HTTPS, TCP/IP, UDP/IP, RTSP, DHCP, NTP, RTPC/RTP, PPPoE, SMTP, DNS, UPnP, FTP, ARP, SNMP	IPv4/IPv6, 802.1x, HTTP, HTTPS, TCP/IP, UDP/IP, RTSP, DHCP, NTP, RTPC/RTP, PPPoE, SMTP, DNS, UPnP, FTP, ARP, SNMP	IPv4/IPv6, 802.1x, HTTP, HTTPS, TCP/IP, UDP/IP, RTSP, DHCP, NTP, RTPC/RTP, PPPoE, SMTP, DNS, UPnP, FTP, ARP, SNMP	IPv4/IPv6, 802.1x, HTTP, HTTPS, TCP/IP, UDP/IP, RTSP, DHCP, NTP, RTPC/RTP, PPPoE, SMTP, DNS, UPnP, FTP, ARP, SNMP	IPv4/IPv6, 802.1x, HTTP, HTTPS, TCP/IP, UDP/IP, RTSP, DHCP, NTP, RTPC/RTP, PPPoE, SMTP, DNS, UPnP, FTP, ARP, SNMP	IPv4/IPv6, 802.1x, HTTP, HTTPS, TCP/IP, UDP/IP, RTSP, DHCP, NTP, RTPC/RTP, PPPoE, SMTP, DNS, UPnP, FTP, ARP, SNMP
Alarm Trigger	Perimeter ,Single Virtual Fences ,Double Virtual Fences ,Loiter ,Multi Loiter ,Object Left ,Object Removed, Abnormal Speed ,Converse, Illegal Parking ,Signal Bad ,Motion Detection,Network disconnect,Disk alarm,I/O alarm	Perimeter ,Single Virtual Fences ,Double Virtual Fences ,Loiter ,Multi Loiter ,Object Left ,Object Removed, Abnormal Speed ,Converse, Illegal Parking ,Signal Bad ,Motion Detection,Network disconnect,Disk alarm,I/O alarm	Perimeter ,Single Virtual Fences ,Double Virtual Fences ,Loiter ,Multi Loiter ,Object Left ,Object Removed, Abnormal Speed ,Converse, Illegal Parking ,Signal Bad ,Motion Detection,Network disconnect,Disk alarm,I/O alarm	Perimeter ,Single Virtual Fences ,Double Virtual Fences ,Loiter ,Multi Loiter ,Object Left ,Object Removed, Abnormal Speed ,Converse, Illegal Parking ,Signal Bad ,Motion Detection,Network disconnect,Disk alarm,I/O alarm	Perimeter ,Single Virtual Fences ,Double Virtual Fences ,Loiter ,Multi Loiter ,Object Left ,Object Removed, Abnormal Speed ,Converse, Illegal Parking ,Signal Bad ,Motion Detection,Network disconnect,Disk alarm,I/O alarm	Perimeter ,Single Virtual Fences ,Double Virtual Fences ,Loiter ,Multi Loiter ,Object Left ,Object Removed, Abnormal Speed ,Converse, Illegal Parking ,Signal Bad ,Motion Detection,Network disconnect,Disk alarm,I/O alarm
RTSP Video	Standard RFC2326, Support QuickTime / VLC Player	Standard RFC2326, Support QuickTime / VLC Player	Standard RFC2326, Support QuickTime / VLC Player	Standard RFC2326, Support QuickTime / VLC Player	Standard RFC2326, Support QuickTime / VLC Player	Standard RFC2326, Support QuickTime / VLC Player
System Compatibility	ONVIF	ONVIF	ONVIF	ONVIF	ONVIF	ONVIF
Ethernet	1 Ethernet (10/100 Base-T) RJ-45 Connector	1 Ethernet (10/100 Base-T) RJ-45 Connector	1 Ethernet (10/100 Base-T) RJ-45 Connector	1 Ethernet (10/100 Base-T) RJ-45 Connector	1 Ethernet (10/100 Base-T) RJ-45 Connector	1 Ethernet (10/100 Base-T) RJ-45 Connector
Connectivity Memory Card Slot	-	Micro SD up to 128GB	Micro SD up to 128GB	-	Micro SD up to 128GB	Micro SD up to 128GB
Connectivity Power: 802.3af PoE	YES	YES	YES	YES	YES	YES
Power Supply	DC12V/PoE; 2.5W No IR, 5.0W IR	DC12V/PoE; 5W No IR, 7W IR	DC12V/PoE; 3W No IR, 5W IR	DC12V/PoE; 3W No IR, 5W IR	DC12V/PoE; 5W No IR, 7W IR	DC12V/PoE; 5W No IR, 7W IR
Operating Temperature	-10°C ~+50°C	-30°C ~+60°C	-30°C ~+60°C	-30°C ~+50°C	-30°C ~+60°C	-30°C ~+60°C
Physical Specs	Φ94×84mm , 350g	Φ119×89mm , 500g	Φ130×112mm , 900g	Φ110×85.4mm, 390g	Φ119×89mm , 500g	Φ119×89mm , 500g
IP Rating	IP66	IP67	IP67, IK10	IP67, IK10	IP66	IP67

Bullet Network Cameras

D-Link's range of Bullet network cameras is a high definition professional surveillance and security solution designed to meet the businesses needs of suitable small, medium, and large enterprises looking to implement a cost-effective monitoring system. Since the built-in Power over Ethernet capability enables them to be powered from just the one data cable direct to the switch. A full range of features makes it easy to find the perfect fit for your surveillance needs.

This series of cameras are all built to IP66 standard, so they're weather-proof and suitable for outdoor environments. Additional features such as long-distance night vision, digital zoom and motion detection/alert make them perfect for the perimeter areas of buildings, alleyways or other dimly lit areas.

DCS-F4712

2MP Full HD Day & Night Indoor / Outdoor Fixed Bullet PoE Network Camera



- 1/2.7" Progressive Scan CMOS
- 3.6mm
- 25fps/30fps@2MP(1920*1080)25fps/30fps@2MP(1920*1080)
- Triple Streams
- Smart IR Up to 20m
- Low bitrate ,Excellent low light performance
- WDR,3D DNR
- ROI, Defog, HLC, Corridor mode, DIS
- IP66

DCS-F4704

4MP Full HD with Fixed Lens: (2.8mm) Network Camera



- 1/3" Progressive Scan CMOS
- 2.8mm(3.6mm optional)
- 25fps/30fps@4MP(2592*1520)
- Triple Streams
- Smart IR Up to 30m
- Low bitrate ,Excellent low light performance
- WDR,3D DNR
- ROI, Defog, HLC, Corridor mode, DIS
- IP66

DCS-F4724

4MP Full HD with motorized Lens (2.7~12mm) Network Camera



- 1/3" Progressive Scan CMOS
- Motorized lens 2.7~12mm
- 25fps/30fps@4MP(2592*1520)
- Triple Streams
- Smart IR Up to 30m
- Low bitrate ,Excellent low light performance
- WDR,3D DNR
- ROI, Defog, HLC, Corridor mode, DIS
- IP67

DCS-F8812

12MP Full HD with motorized lens (4.1~12.8mm) Network Camera



- 1/1.7" Progressive Scan CMOS
- Motorized lens
- 20fps@12MP(4000*3000)
- Triple Streams
- Smart IR Up to 80m
- Low bitrate ,Excellent low light performance
- dWDR,3D DNR, P-Iris
- ROI, Defog, HLC, Corridor mode, DIS
- IP67,IK10 optional

DCS-F4782F

2MP Full HD with Fixed Lens (6mm) and facial recognition Network Camera



- 1/2.8" Progressive Scan CMOS
- 6mm
- 25fps/30fps@2MP(1920*1080)
- Triple Streams
- Smart IR Up to 30m
- Support Face, body, head-shoulder detection and capture
- High performance , real-time to capture 15 targets for each
- Detecting and capture success rate 97%
- (depending on installation and angle)
- Max angle deviation $\pm 45^\circ$, up and down $\pm 25^\circ$
- WDR,3D DNR, ROI, Defog, HLC, DIS
- IP66

DCS-F4714

4MP Day & Night Outdoor Fixed Bullet Network Camera



- 1/3" Progressive Scan CMOS
- Fixed, 3.6mm
- 25fps/30fps@4MP(2592*1520)
- Triple Streams
- Smart IR Up to 30m
- Low bitrate ,Excellent low light performance
- WDR,3D DNR
- ROI, Defog, HLC, Corridor mode, DIS
- IP67

MODEL	DCS-F4712	DCS-F4714	DCS-F4724	DCS-F4704	DCS-F8812	DCS-F4782F
Camera Type	Bullet	Bullet	Bullet	Bullet	Bullet	Bullet
Image Sensor Type	1/2.7" CMOS	1/3" CMOS	1/3" CMOS	1/3" CMOS	1/1.7" CMOS	1/28" CMOS
Connectivity	IP	IP	IP	IP	IP	IP
Megapixel	2MP	4MP	4MP	4MP	12MP	2MP
Wide Dynamic Range (WDR)	WDR	WDR	WDR	WDR	WDR	WDR
Noise Reduction	2D/3D	2D/3D	2D/3D	2D/3D	2D/3D	2D/3D
Lens, Focal length	Fixed, 3.6mm	Fixed, 3.6mm	Motorized Lens, 2.7-12mm	Fixed Lens, 2.8mm	Motorized lens, 2.7-12mm	Fixed, 6mm
F-Number	F2.0	F1.2	F1.3	F2.8	F1.53	F2.0
Minimum Illumination (Lux)	Colour: 0.2Lux, B/W:0Lux (IR ON)	Colour: 0.01Lux, B/W:0Lux (IR ON)	Colour: 0.01Lux, B/W:0Lux (IR ON)	Colour: 0.01Lux, B/W:0Lux (IR ON)	Color :0.009Lux@(F1.2,AGC ON); B&W: 0Lux@(IR LED ON)	Color :0.009Lux@(F1.2,AGC ON); B&W: 0Lux@(IR LED ON)
Angle of View	85°	85°	100° - 30°	100°	98°-34.5°	52°
IR Wavelength	850nm	850nm	850nm	850nm	850nm	850nm
Day & Night (Built-in IR)	yes, up to 20m	yes, up to 30m	yes, up to 30m	yes, up to 30m	yes, up to 80m	yes, up to 30m
Video	H.265/H.264/MJPEG	H.265/H.264/MJPEG	H.265/H.264/MJPEG	H.265/H.264/MJPEG	H.265/H.264/MJPEG	H.265/H.264/MJPEG
Maximum Video Resolution (16:9)	1920x1080, 30fps	2592x1520, 30fps	2592x1520, 30fps	2592x1520, 30fps	4000x3000/20fps	4000x3000/20fps
Bit Rate (CBR/VBR)	Main stream : 1080P: 500Kbps-12Mbps , 720P: 200Kbps-8Mbps ; Sub stream : 100kb-6000kb	Main stream : 500kb-12000kb ;Sub stream : 100kb-6000kb	Main stream : 500kb-12000kb ;Sub stream : 100kb-6000kb	Main stream : 500kb-12000kb ;Sub stream : 100kb-6000kb	Main stream : 500Kb-16Mb ;Sub stream :100Kb-6Mb	Main stream : 500Kb-16Mb ; Sub stream : 100Kb-6Mb
Audio Compression	-	G.711 ,RAW_PCM	G.711 ,RAW_PCM	-	G.711 ,RAW_PCM	-
Stream	Stream 1 : 1920x1080/1280x720 Stream 2 : D1 to QVGA Stream 3 : 1920x1080/1280x720/D1/VGA/640 x360/CIF/QVGA	Stream1 : 2592x1520/2560x1440/2304x1296/1920x1080 Stream 2 : D1 to QVGA	Stream1 : 2592x1520/2560x1440 /2304x1296/1920x1080 Stream 2 : D1 to QVGA	Stream1 : 2592x1520/2560x1440/2304x1296/1920x1080 Stream : 2 D1 to QVGA	Stream1 : 4000x3000/20fps;4096x2160/3840x2160/1920x1080/1280x720/30fps Stream 2 : D1/VGA/CIF Stream 3 : 4000x3000 /4096x2160 /3840x2160 /1920x1080 /1280x720 /D1/VGA/CIF	Stream1: 4000x3000/20fps;4096x2160/3840x2160/1920x1080/1280x720/30fps Stream 2 : D1/VGA/CIF Stream 3 : 4000x3000 /4096x2160 /3840x2160 /1920x1080 /1280x720 /D1/VGA/CIF
Network Protocols	IPv4,802.1x,HTTP,HTTPS,TCP/IP,UDP/IP,RTSP,DHCP,NTP, RTP/RTCP, PPPoE, SMTP, DNS, UPnP, FTP, ICMP ,IGMP, Unicast and Multicast	IPv4,802.1x,HTTP,HTTPS,TCP/IP,UDP/IP,RTSP,DHCP,NTP, RTP/RTCP, PPPoE, SMTP, DNS, UPnP, FTP, ICMP ,IGMP, Unicast and Multicast	IPv4,802.1x,HTTP,HTTPS,TCP/IP,UDP/IP,RTSP,DHCP,NTP, RTP/RTCP, PPPoE, SMTP, DNS, UPnP, FTP, ICMP ,IGMP, Unicast and Multicast	IPv4,802.1x,HTTP,HTTPS,TCP/IP,UDP/IP,RTSP,DHCP,NTP, RTP/RTCP, PPPoE, SMTP, DNS, UPnP, FTP, ICMP ,IGMP, Unicast and Multicast	IPv4,802.1x,HTTP,HTTPS,TCP/IP,UDP/IP,RTSP,DHCP,NTP, RTP/RTCP, PPPoE, SMTP, DNS, UPnP, FTP, ICMP ,IGMP, Unicast and Multicast	IPv4,802.1x,HTTP,HTTPS,TCP/IP,UDP/IP,RTSP,DHCP,NTP, RTP/RTCP, PPPoE, SMTP, DNS, UPnP, FTP, ICMP ,IGMP, Unicast and Multicast
Alarm Trigger	Perimeter ,Single Virtual Fences ,Double Virtual Fences ,Loiter ,Multi Loiter ,Object Left ,Object Removed, Abnormal Speed ,Converse, Illegal Parking ,Signal Bad ,Motion Detection,Network Disconnect,Disk Alarm,I/O Alarm	Perimeter ,Single Virtual Fences ,Double Virtual Fences ,Loiter ,Multi Loiter ,Object Left ,Object Removed, Abnormal Speed ,Converse, Illegal Parking ,Signal Bad ,Motion Detection,Network Disconnect,Disk Alarm,I/O Alarm	Perimeter ,Single Virtual Fences ,Double Virtual Fences ,Loiter ,Multi Loiter ,Object Left ,Object Removed, Abnormal Speed ,Converse, Illegal Parking ,Signal Bad ,Motion Detection,Network Disconnect,Disk Alarm,I/O Alarm	Perimeter ,Single Virtual Fences ,Double Virtual Fences ,Loiter ,Multi Loiter ,Object Left ,Object Removed, Abnormal Speed ,Converse, Illegal Parking ,Signal Bad ,Motion Detection,Network Disconnect,Disk Alarm,I/O Alarm	Perimeter ,Single Virtual Fences ,Double Virtual Fences ,Loiter ,Multi Loiter ,Object Left ,Object Removed, Abnormal Speed ,Converse, Illegal Parking ,Signal Bad ,Motion Detection,Network Disconnect,Disk Alarm,I/O Alarm	Perimeter ,Single Virtual Fences ,Double Virtual Fences ,Loiter ,Multi Loiter ,Object Left ,Object Removed, Abnormal Speed ,Converse, Illegal Parking ,Signal Bad ,Motion Detection,Network Disconnect,Disk Alarm,I/O Alarm
RTSP Video	Standard RFC2326, Support QuickTime / VLC Player	Standard RFC2326, Support QuickTime / VLC Player	Standard RFC2326, Support QuickTime / VLC Player	Standard RFC2326, Support QuickTime / VLC Player	Standard RFC2326, Support QuickTime / VLC Player.	Standard RFC2326, Support QuickTime / VLC Player.
System Compatibility	ONVIF	ONVIF	ONVIF	ONVIF	ONVIF	ONVIF
Ethernet	1 Ethernet (10/100 Base-T) RJ-45 Connector	1 Ethernet (10/100 Base-T) RJ-45 Connector	1 Ethernet (10/100 Base-T) RJ-45 Connector	1 Ethernet (10/100 Base-T) RJ-45 Connector	Ethernet (10/100 Base-T) RJ-45 Connector	Ethernet (10/100 Base-T) RJ-45 Connector
Connectivity Memory Card Slot	-	-	-	-	-	-
Connectivity Power: 802.3af PoE	YES	YES	YES	YES	YES	YES
Video Output	-	-	-	-	-	-
Power Supply	DC12V/PoE; 2.5W No IR, 5.0W IR	DC12V/PoE; 2.5W No IR, 5W IR	DC12V/PoE; 2.5W No IR, 5W IR	DC12V/PoE; 2.5W No IR, 5W IR	DC12V/POE, MAX 11W	DC12V/POE, MAX 11W
Operating Temperature	-10°~-+50°(14°F ~ 122°F)	-30°~+60°(-22°F ~ 140°F)	-30°~+60°(-22°F ~ 140°F)	-30°~+60°(-22°F ~ 140°F)	-40°C +60°C (-40°F+140°F)	-40°C +60°C (-40°F+140°F)
Physical Specs	Ø196×62mm , 360g	Ø169×70x60mm , 630g	Ø80×265mm , 830g	194.4×63×63mm, 500g	φ110×377mm, 1700g	φ110×377mm, 1700g
IP Rating	IP66	IP67	IP67	IP67	IP67	IP67

Pan, Tilt, Zoom (PTZ) Network Cameras (Indoor / Outdoor)

These high-speed PTZ and dome cameras feature full 360° panning for all-round super-wide-range surveillance. Available in both indoor and outdoor enclosures, and with ultra-low-lux sensors and ICR support, these cameras can be automated with preset focal points and an 'auto patrol cruise' to provide a continual scan inside or outside a building.

DCS-F6123

**12x optional zoom 3MP Full HD Day & Night
indoor/ outdoor - High-Speed Vandal Proof Dome
PoE Network Camera**



- 1/2.8" Progressive Scan CMOS
- 12X Optical Zoom, 16X Digital Zoom
- HD 3MP(2048×1536)
- Multiple Streams
- Smart IR Range 100m
- Low bitrate ,Good low light performance
- 3D DNR,dWDR,ICR
- Auto Tracking
- IP66 compliant weather proof and IK10 vandal-proof housing

DCS-F6917

**Optical Zoom, 30x 3MP Full HD Day
& Night Indoor/Outdoor High Speed
Dome Network Camera**



- 1/2.8" Progressive Scan CMOS
- 30X Optical Zoom, 16X Digital Zoom
- HD 3MP (2048×1536)
- Multiple Streams
- Smart IR Range 200m
- Low bitrate , Good low light performance
- 3D DNR,dWDR,ICR, IVS



MODEL	DCS-F6123	DCS-F6917
Camera Type	PTZ	PTZ
Image Sensor Type	1/2.8" CMOS	1/2.8" CMOS
Connectivity	IP	IP
Megapixel	3MP 12X	3MP 30X
Wide Dynamic Range (WDR)	WDR	WDR
Noise Reduction	2D/3D	2D/3D
Lens, Focal length	12X Optical Zoom, 4.7~56.4mm	30X Optical Zoom, 4.5-135mm
F-Number	F1.2	F1.6 - F4.4
Minimum Illumination (Lux)	Color: 0.01Lux@(F1.2,AGC ON); B/W: 0Lux@(IR LED ON)	Color: 0.01Lux@(F1.2,AGC ON); B/W: 0Lux@(IR LED ON)
Angle of View	69.7°~7.56°	59.8°~2.3°
IR Wavelength	850nm	850nm
Day & Night (Built-in IR)	yes, up to 100m	yes, up to 200m
Video	H.265/H.264/MJPEG	H.265/H.264/MJPEG
Maximum Video Resolution (16:9)	2048x1536, 30fps	2048x1536, 30fps
Bit Rate (CBR/VBR)	Main stream: 500kbps~12Mbps;Sub stream: 100kbps~4Mbps	Main stream: 500kbps~12Mbps;Sub stream: 100kbps~4Mbps
Audio Compression	G.711 ,RAW_PCM	G.711 ,RAW_PCM
Stream	Stream 1 : 2048(H) ×1536(V) Stream 2 : 1080P/720P/D1/CIF/QCIF/VGA/QVGA/640x360	Stream 1 : 2048x1536,1920x1080,1280x720 Stream 2 : D1/CIF/QCIF/VGA/QVGA/640x360
Network Protocols	IPv4,802.1x,HTTP,HTTPS,TCP/IP,UDP/IP,RTSP,DHCP,NTp, RTCP/RTp, PPPoE, SMTP, DNS, UPnP, FTP, ICMP ,IGMP, Unicast and Multicast.	IPv4,802.1x,HTTP,HTTPS,TCP/IP,UDP/IP,RTSP,DHCP,NTp, RTCP/RTp, PPPoE, SMTP, DNS, UPnP, FTP, ICMP ,IGMP, Unicast and Multicast.
Alarm Trigger	Perimeter ,Single Virtual Fences ,Double Virtual Fences ,Loiter ,Multi Loiter ,Object Left ,Object Removed, Abnormal Speed ,Converse, Illegal Parking ,Signal Bad ,Motion Detection,Network Disconnect,Disk Alarm,I/O Alarm	Perimeter ,Single Virtual Fences ,Double Virtual Fences ,Loiter ,Multi Loiter ,Object Left ,Object Removed, Abnormal Speed ,Converse, Illegal Parking ,Signal Bad ,Motion Detection,Network Disconnect,Disk Alarm,I/O Alarm
RTSP Video	Standard RFC2326, Support QuickTime / VLC Player.	Standard RFC2326, Support QuickTime / VLC Player.
System Compatibility	ONVIF	ONVIF
Ethernet	Ethernet (10/100 Base-T) RJ-45 Connector	Ethernet (10/100 Base-T) RJ-45 Connector
Connectivity Memory Card Slot	Micro SD up to 128GB	Micro SD up to 128GB
Connectivity Power: 802.3af PoE	YES	YES
Video Output	-	-
Power Supply	DC12V/POE+, MAX 25W	AC24V/2.5A, MAX 40W
Operating Temperature	-40°C +60°C (-40°F +140°F)	-40°C +60°C (-40°F +140°F)
Physical Specs	321.3x222.3x146.6mm, 1500g	Ø205x332mm, 4350g
IP Rating	IP67	IP66

Network Video Recorders

D-Link's Professional Network Video Recorders (NVR) offers a comprehensive video display, storage, and management solution. DNR-F4216 NVR provides reliable high quality remote monitoring functionality that is much more cost-effective than conventional surveillance systems.

D-Link's intuitive GUI interface simplifies viewing live and recorded video from the NVR. The camera status page shows connection and recording status, along with frame rate and bit rate information for each camera. Users are provided with a variety of options for viewing and organizing camera footage on-screen. For a system with multiple channels, users can simply click cameras to view live video. Camera names and recording status are displayed via OSD (On Screen Display) to aid in identification. Presets from within the interface can be set to instantly restore a previously saved view. A single camera may be viewed full screen. Users can control pan/tilt/zoom (PTZ) functions from interface using provided interface buttons. A clear single-page interface assists with configuration including compression, resolution and frame rate for connected cameras.

DNR-F4104 4 Channel 1 Bay NVR



- Up to 4ch IP cameras access
- Easy to use Same Interface of GUI/WEB/Client
- 1 SATA hard disk up to 8TB
- 2 RJ45 10M/100M network interface
- Simultaneous HD-OUTI & VGA up to 4K output
- 2 x 2.0 USB Host
- 4ch Alarm In/1ch Alarm Out
- 1ch Audio I/O

DNR-F4108 8 Channel 1 Bay NVR



- Up to 8ch IP cameras access
- Easy to use Same Interface of GUI/WEB/Client
- 1 SATA hard disk up to 8TB
- 2 RJ45 10M/100M network interface
- Simultaneous HD-OUT & VGA up to 4K output
- 2 x 2.0 USB Host
- 8ch Alarm In/1ch Alarm Out
- 1ch Audio I/O

DNR-F4216 16 Channel 2 Bay NVR



- Up to 16 Channel IP Cameras
- Easy to use same Interface of GUI/WEB/Client 2 SATA hard disk each up to 8TB
- 2 x RJ45 10M/100M/1000M network interface
- Simultaneous HD-Out & VGA, up to 4K Output
- 2 x 2.0 & 1 x 3.0 USB Host.
- 1 ch Audio I/O
- 16ch Alarm input, 4ch Alarm Output

DNR-F4114P 4 Channel 1 Bay with 4 PoE Ports NVR



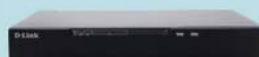
- Up to 4ch IP cameras access
- Easy to use Same Interface of GUI/WEB/Client
- 1 SATA hard disk up to 8TB
- 1 RJ45 10M/100M network interface
- 4CH POE Ports
- Simultaneous HD-OUTI & VGA up to 4K output
- 2 x 2.0 USB Host
- 4ch Alarm In/1ch Alarm Out
- 1ch Audio I/O

DNR-F4118P 8 Channel 1 Bay with 8 PoE Ports NVR



- Up to 8ch IP cameras access
- Easy to use Same Interface of GUI/WEB/Client
- SATA hard disk up to 8TB
- 1 RJ45 10M/100M network interface
- 8CH POE Ports
- Simultaneous HD-OUT & VGA up to 4K output
- 2 x 2.0 USB Host
- 8ch Alarm In/1ch Alarm Out
- 1ch Audio I/O

DNR-F4218P 8 Channel 2 Bay with 8 PoE Ports NVR



- Up to 8ch IP cameras access
- Easy to use Same Interface of GUI/WEB/Client
- 2 SATA hard disk up to 8TB
- 1 RJ45 10M/100M network interface
- 8CH POE Ports
- Simultaneous HD-OUT & VGA up to 4K output
- 2 x 2.0 USB Host
- 8ch Alarm In/1ch Alarm Out
- 1ch Audio I/O

DNR-F4226P 16 Channel 2 Bay with 16 PoE Ports NVR



- Up to 16ch IP cameras access
- Easy to use Same Interface of GUI/WEB/Client
- 2 SATA hard disk up to 8TB
- 1 RJ45 10M/100M/1000M network interface
- 16CH POE Ports
- Simultaneous HD-OUT & VGA up to 4K output
- 2 x 2.0 USB Host
- 8ch Alarm In/1ch Alarm Out
- 1ch Audio I/O

DNR-F4432 32 Channel 4 Bay NVR



- Up to 32ch IP cameras access
- Easy to use Same Interface of GUI/WEB/Client
- 4 SATA hard disk each up to 8TB
- 2RJ45 10M/100M/1000M network interface
- Simultaneous HD-OUT & VGA ,up to 4K output
- 2 x 2.0 & 1 x 3.0 USB Host
- 1ch Audio I/O
- 16ch Alarm Input, 4ch Alarm Output

DNR-F4832 32 Channel 8 Bay NVR



- Up to 32ch IP cameras access
- Easy to use Same Interface of GUI/WEB/Client
- 8 SATA hard disk each up to 8TB
- 2 X RJ45 10M/100M/1000M network interface
- Simultaneous HD-OUT & VGA ,up to 4K output
- 2 x 2.0 & 1 x 3.0 USB Host
- 1ch Audio I/O
- 16ch Alarm input, 4ch Alarm output

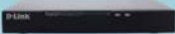



DNR-F4864 64 Channel 8 Bay NVR



- Up to 64ch IP cameras access
- Easy to use Same Interface of GUI/WEB/Client
- 8 SATA hard disk each up to 8TB
- 2 X RJ45 10M/100M/1000M network interface
- Simultaneous HD-OUT & VGA ,up to 4K output
- 2 x 2.0 & 1 x 3.0 USB Host
- 1ch Audio I/O
- 16ch Alarm Input, 4ch Alarm Output



MODEL	DNR-F4104	DNR-F4108	DNR-F4216	DNR-F4114P	DNR-F4118P	DNR-F4218P
Key specs (Ignore, for info only)	1HDD 4CH NVR, H.264 IPC supported, 40Mbps incoming bandwidth, 1CH 6MP/4CH 1080P decode, 1HDMI&1VGA, audio 1in1out, alarm 1in1out, 1RJ45, 2USB, 4POE, DC48V, 1U casing, support 6TB disk	1HDD 8CH NVR, H.264 IPC supported, 80Mbps incoming bandwidth, 1CH 6MP/4CH 1080P/8CH D1 decode, 1HDMI&1VGA, audio 1in1out, 1RJ45, 2USB, DC12V, 1U casing, support 6TB disk	2HDD 16CH NVR, H.264 IPC supported, 160Mbps incoming bandwidth, 1CH 6MP/4CH 1080P/16CH D1 decode, 1HDMI&1VGA, audio 1in1out, alarm 2in2out, 2RJ45, 2USB, DC12V, 1U casing, support 6TB disk	4CH 1HDD H.265 NVR, 4CH POE	8CH 1HDD H.265 NVR, 8CH POE	8CH 2HDD H.265 NVR, 8CH POE
Number of Channels	4	8	16	4	8	8
Compression Format	H.264 High Profile	H.264 High Profile	H.264 High Profile	H.265 High Profile	H.265 High Profile	H.265 High Profile
Video Input	4ch ip cameras	8ch ip cameras	16ch ip cameras	4ch ip cameras	8ch ip cameras	8ch ip cameras
Storage	1SATA, Up to 8TB for each disk	1SATA, Up to 8TB for each disk	2SATA, Up to 8TB for each disk	1SATA, Up to 8TB for each disk	1SATA, Up to 8TB for each disk	2SATA, Up to 8TB for each disk
Video Input	-	-	-	-	-	-
Video Output	Live View/Playback/Recording Resolution: 6MP/5MP/4MP/3MP/1080P/960P/720P/D1/VGA/CIF/QCIF Live View/Playback Resolution: Live View: 4ch 1080P/1ch 6MP@30fps Playback: 4ch 1080P/1ch 6MP	Live View/Playback/Recording Resolution: 6MP/5MP/4MP/3MP/1080P/960P/720P/D1/VGA/CIF/QCIF Live View/Playback Resolution: Live View: 8ch D1/4ch 1080P/1ch 6MP@30fps Playback: 4ch 1080P/1ch 6MP	Live View/Playback/Recording Resolution: 6MP/5MP/4MP/3MP/1080P/960P/720P/D1/VGA/CIF/QCIF Live View/Playback Resolution: Live View: 16ch D1/4ch 1080P/1ch 6MP@30fps Playback: 4ch 1080P/1ch 6MP	Live View/Playback/Recording Resolution: 8MP/6MP/5MP/4MP/3MP/1080P/720P/D1/VGA/CIF/QCIF Live View/Playback Resolution: Live View 4ch 1080P/1ch 8MP @30fps Playback 4ch 1080P/1ch 8MP	Live View/Playback/Recording Resolution: 8MP/6MP/5MP/4MP/3MP/1080P/720P/D1/VGA/CIF/QCIF Live View/Playback Resolution: Live View 8ch 1080P/1ch 8MP @30fps Playback 8ch 1080P/1ch 8MP	Live View/Playback/Recording Resolution: 8MP/6MP/5MP/4MP/3MP/1080P/720P/D1/VGA/CIF/QCIF Live View/Playback Resolution: Live View 8ch 720P/4ch 1080P/1ch 8MP @30fps Playback 8ch 720P/4ch 1080P/1ch 8MP
Network Interface	1 RJ45 10M/100M network interface	1 RJ45 10M/100M network interface	2 RJ45 10M/100M/1000M network interface	1 RJ45 10M/100M	1 RJ45 10M/100M	1 RJ45 10M/100M
Power	DC 48V/1.35A, Max Input 70W	DC12V/2A ,Max Input 24W	DC12V/2A, Max Input 36W	DC48V	DC48V	AC110-220V
Operating Temperature	-10°C ~ 45°C (14°F ~ 113°F)	-10°C ~ 45°C (14°F ~ 113°F)	-10°C ~ 45°C (14°F ~ 113°F)	-10°C ~ 45°C (14°F ~ 113°F)	-10°C ~ 45°C (14°F ~ 113°F)	-10°C ~ 45°C (14°F ~ 113°F)
Physical Specs	260mm x175mm x50mm, 700g	255mm x235mm x47.5mm, 870g	372mm x311mm x44.5mm, 2300g	255mm x235mm x47.5mm	255mm x235mm x47.5mm	372mm x310.5mm x46.5mm

			
DNR-F4226P	DNR-F4432	DNR-F4832	DNR-F4864
16CH 2HDD H.265 NVR, 16CH POE	32CH 4HDD NVR, H.265/H.264 IPC supported, 256Mbps incoming bandwidth, 256Mbps transferring bandwidth, 4CH 4K/8CH 4MP/16CH 1080P/32CH 720P decode, 2HDMI&1VGA, audio 1in1out, alarm 16in4out, 1eSATA, 2RJ45, 3USB, 1RS485&RS232, AC100~240V, 1.5U casing, support 8TB disk	32CH 8HDD NVR, H.265/H.264 IPC supported, 256Mbps incoming bandwidth, 256Mbps transferring bandwidth, 4CH 4K/8CH 4MP/16CH 1080P/32CH 720P decode, 2HDMI&1VGA, audio 1in1out, alarm 16in4out, 1eSATA, 2RJ45, 3USB, 1RS485&RS232, AC100~240V, 2U casing, support 8TB disk	64CH 8HDD NVR, H.265/H.264 IPC supported, 320Mbps incoming bandwidth, 320Mbps transferring bandwidth, 4CH 4K/8CH 4MP/16CH 1080P/32CH 720P/64CH D1 decode, 2HDMI&1VGA, audio 1in1out, alarm 16in4out, 1eSATA, 2RJ45, 3USB, 1RS485&RS232, AC100~240V, 2U casing, support 8TB disk
16	32	32	64
H.265 High Profile	H.265 High Profile	H.265 High Profile	H.265 High Profile
16ch ip cameras	32ch ip cameras	32ch ip cameras	64ch ip cameras
2SATA, Up to 8TB for each disk	4SATA, Up to 8TB for each disk	8SATA, Up to 8TB for each disk	8SATA, Up to 8TB for each disk
-	-	-	-
Live View/Playback / Recording Resolution: 8MP/6MP/5MP/4MP/3MP/1080P/720P/D1/VGA/CIF/QCIF Live View/Playback Resolution: Live View 16ch D1 /8ch 720P/4ch 1080P/1ch 8MP @30fps Playback 4ch 1080P /1ch 8MP	Live View/Playback/ Recording Resolution: 8MP/6MP/5MP/4MP /3MP/1080P/720P/D1/VGA/CIF/QCIF Live View/Playback Resolution: Live View: 32ch 720p/16ch 1080p /8ch 4MP/4ch 8MP @30fps; Playback: 16ch 1080P/8ch 4MP /4ch 8MP/1ch 12MP	Live View/Playback/ Recording Resolution: 8MP/6MP/5MP/4MP/3MP/1080P/720P/D1/VGA/CIF/QCIF Live View/Playback Resolution: Live View: 32ch 720p/16ch 1080p/8ch 4MP/4ch 8MP @30fps Playback: 16ch 1080P/8ch 4MP/4ch 8MP/1ch 12MP	Live View/Playback/ Recording Resolution: 8MP /6MP/5MP/4MP/3MP/1080P/960P/720P/D1/VGA/CIF/QCIF Live View/Playback Resolution: Live View: 64ch D1/32ch 720p/16ch 1080P/8ch 4MP/4ch 8MP@30fps Playback: 16ch 1080P/8ch 4MP/4ch 8MP/1ch 12MP
1 RJ45 10M/100M	2 RJ45 10M/100M/1000M	2 RJ45 10M/100M/1000M	2 RJ45 10M/100M /1000M
AC100-240V	AC110/220V	AC110/220V	AC110/220V,47-63Hz ,Max input 200W
-10°C ~ 45°C (14°F ~ 113°F)	-10°C ~ 45°C (14°F ~ 113°F)	-10°C ~ 45°C (14°F ~ 113°F)	-10°C ~ 45°C (14°F ~ 113°F)
372mm ×310.5mm ×46.5mm	440mm x376mm x67mm, 4200g	440mm x435mm x99.8mm, 7200g	440mm x435mm x99.8mm, 7200g

Video Management Software (VMS)

DCMS PRO is a Video Management Software (VMS) used to manage D-Link Value Cameras (DCS-Fxxxx series) and provides video recording, live view and playback management for up to 96 network cameras.

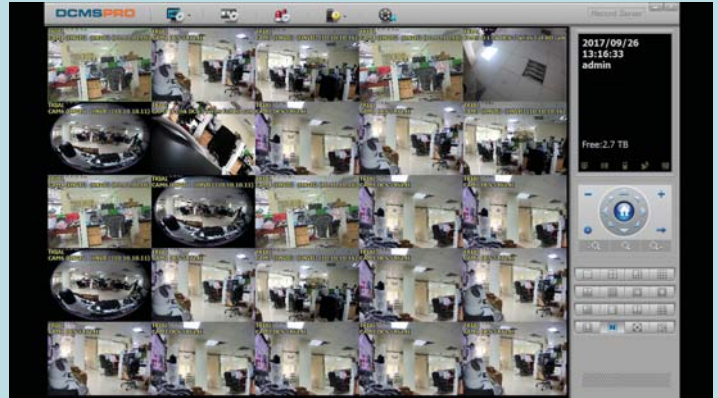
It is a comprehensive surveillance system designed to centrally manage multiple IP cameras for Home, Small Office Home Office (SOHO), or Small and Medium Business (SMB) users.

It offers digital monitoring and recording capabilities of video, audio and events for various security applications, and the software provides users with a wide array of features including an 'e-map mode' which allows users to arrange a map with camera locations and orientation.

Furthermore, this easy-to-use surveillance software provides users with a wide array of features, including multiple-channel playback, high-resolution monitoring and live view.

DCMS Pro comes in two License versions Simple and Advanced. The licensing is based on Per Channel basis. DCMS PRO simple version (DCS-F400) is a simple version of VMS that meets the needs in a general surveillance system, while keeps this system easy to understand, install and use.

DCSM PRO advanced version (DCS-F450) is an advanced version of VMS designed to satisfy critical surveillance project requests. Opening the possibilities to build a PSIM surveillance system



Video Display



Video Playback

SOUTH EAST ASIA

BRUNEI

D-LINK Brunei

Service Center Email Support:
✉ support@sg.dlink.com

🏠 www.dlink.com.bn
www.facebook.com/DLinkBrunei

CAMBODIA

D-LINK Cambodia

Service Center Email Support:
✉ support@sg.dlink.com

🏠 www.dlink.com.sg
www.facebook.com/DLinkCambodia

INDONESIA

D-LINK Indonesia

APL Tower 22nd floor unit T7
Jl. Letjen S. Parman Kav 28,
Grogol Petamburan
Jakarta Barat 11470, Indonesia
Tel (62-21) 2933 7545
Fax (62-21) 571 9609

Service Center Email Support
✉ support@id.dlink.com

Technical Support Hotline
(Local Toll Free)
(62) 0800-14014-97

🏠 www.dlink.co.id
www.facebook.com/DLinkIndonesia

LAOS

D-LINK Laos

Service Center Email Support:
✉ support@sg.dlink.com

🏠 www.dlink.com.sg
www.facebook.com/DLinkLaos

MALAYSIA

D-LINK Malaysia

Strata Office SO-20-08, Menara 1,
KL Eco City, Jalan Bangsar, Kg. Hj. Abdullah
Hukum, 59200 Kuala Lumpur
Tel (60-3) 2202 0032
Fax (60-3) 6201 4882

Service Center Email Support
✉ support@sg.dlink.com

Technical Support Hotline
(Local Toll Free)

1800-88-2880

🏠 www.dlink.com.my
www.facebook.com/DLinkMalaysia

MYANMAR

D-LINK Myanmar

Service Center Email Support:
✉ support@sg.dlink.com

Technical Support Hotline
(95-9) 44 900 2077

🏠 www.dlink.com.mm
www.facebook.com/DLinkMyanmar

PHILIPPINES

D-LINK Philippines

Unit 2607, IBP Tower, Jade Drive,
Ortigas Center, Pasig City
Manila, Philippines
Tel (63-2) 637 1299
(63-2) 637 1301

Service Center Email Support
✉ support@sg.dlink.com

24x7 Hotline (Local Toll Free)

1800-1-888-3565

24x7 Hotline (non-PLDT)

(63-2) 8470 3469

🏠 www.dlink.com.ph
www.facebook.com/DLinkPhilippines

SINGAPORE

D-LINK Singapore

1 International Business Park
The Synergy #03-12
Singapore 609917
Tel (65) 6774 6233
Fax (65) 6774 6322

D-LINK Service Center

1 International Business Park
The Synergy #03-12
Singapore 609917
Tel (65) 6774 6233
✉ support@sg.dlink.com

24x7 Technical Support Hotline
(65) 6501 4200

🏠 www.dlink.com.sg
www.facebook.com/DLinkSingapore

THAILAND

D-LINK Thailand

No. 1550 Thanapoom Tower
7th Floor, Zone E, New Petchburi Road
Makkasan Sub-district, Ratchtevee District,
Bangkok 10400, Thailand
Tel (66-2) 2652 9440-2
Fax (66-2) 2652 9443

Service Center Email Support:
✉ support@sg.dlink.com

Technical Support Hotline
(Not Local Toll Free)

0-2035-7200

🏠 www.dlink.co.th
www.facebook.com/DLinkThailandFans

VIETNAM

D-LINK Vietnam

8th Floor, Robot Tower
308 – 308C Dien Bien Phu Street
Ward 4, District 3,
HCM City, Vietnam
Tel (84-8) 38328888

Service Center Email Support:
✉ support@vn.dlink.com

24x7 Technical Support Hotline
(84-28) 3832 9999

🏠 www.dlink.com.vn
www.facebook.com/DLinkVietnam

Get connected with us now and find the nearest
D-Link Distributor at your region.
Just scan the QR code below.

