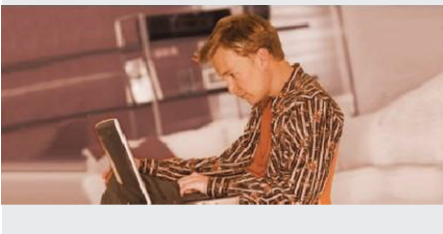




## Dual Band Wireless AC1200 Router with VOIP

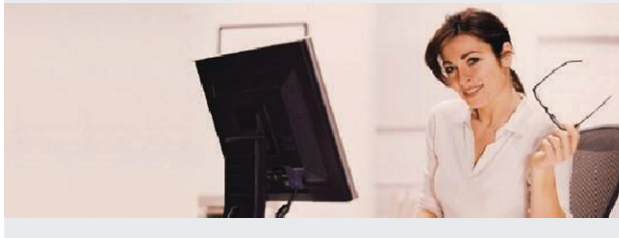
### **CONNECT TO INTERNET PHONES**

2 FXS phone ports for internet phone connections



### **HIGH-SPEED AC1200 DUAL-BAND Wi-Fi**

Dual-band Wireless AC Wave 2 up to 1200 Mbps



### **SECURE NETWORK SHARING**

Firewall protection, user access control, WPA/WPA2 wireless security, QoS support –all from a single device



### **EVERYTHING YOU NEED FOR A HOME**

Get everything from the D-Link DVG-F2452 Wireless AC VoIP Modem Router. This all-encompassing device includes WAN Port two VoIP phone connections, 802.11ac wireless interface, and a 4-port Gigabit switch. This router provides all the functions that your home needs to establish a fast, secure Internet connection, make and receive Internet calls, and wirelessly share the Internet link with your family members.

### **SECURE WIRED AND WIRELESS CONNECTION**

The DVG-F2452 Wireless AC VoIP Modem Router provides an integrated dual-band Wireless AC Wave 2 up to 1200 Mbps, Four Ethernet ports to connect to computers through the network cables. It provides WEP data encryption and WPA/WPA2 wireless security, MAC/ URL filtering, Domain Blocking to secure both Wired and Wireless network.

### **SIMPLE TO INSTALL AND USE**

The DVG-F2452 Wireless AC VoIP Router can be installed quickly and easily almost anywhere. This router is great for situations where an impromptu wireless network must be set up, or wherever conventional network access is unavailable.

## WHAT THIS PRODUCT DOES

The DVG-F2452 Wireless AC1200 4-port Ethernet IAD is a versatile, high-speed remote router for home and the small office. Users can embrace the great convenience and efficiency not only for Internet browsing, P2P applications, on-line gaming but also for IPTV service, VoIP service, sharing of printers and USB storage devices etc., either through wired or wireless connectivity. Meanwhile, DVG-F2452 provides physical Giga Ethernet WAN port and FXS port for VoIP.

## CLEAR, SMOOTH VOICE OVER THE INTERNET

The DVG-F2452 incorporates a Quality of Service (QoS) especially tuned for VoIP traffic to ensure that voice received through the Internet is the same as or even surpasses those received on the ordinary phone

## TECHNICAL SPECIFICATIONS

### LED STATUS INDICATORS

- Power
- Internet
- FXS 1 ~2
- WAN
- LAN 1~4
- USB
- WLAN
- WPS

### PORTS

- 1 x 10/100/1000Mbps WAN
- 4 x 10/100/1000Mbps LAN
- 1 x USB port
- 2 x FXS RJ-11 ports

### Antenna Type

- 4x5dbi

### STANDARDS

- 802.11ac
- 802.11a
- 802.11n
- 802.11b
- 802.11g
- 802.3
- 802.3u
- 802.3az

### DATA RATES \*\*

- 2.4Ghz
  - Up to 300Mbps
- 5 Ghz
  - Up to 867Mbps

### WIRELESS SECURITY

- 64/128-bit WEP (Wired Equivalent Privacy)
- WPA & WPA2 (Wi-Fi Protected Access)
- 802.1x Radius

### VOIP PROTOCOL SUPPORT

- SIP

### AUDIO CODE

- G.711u-law/A-law
- G.722
- G.729A/B

### ECHO CANCELLATION

- G.168

### FAX FUNCTION SUPPORT

- G.711 pass through
- T.38

### NETWORK PROTOCOLS & FEATURES

- NAT/NAPT (RFC 1631)
- RIP v1 (RFC 1058)
- RIP v2 (RFC 1723)
- Static Routing
- DNS
- TCP/UDP
- DHCP Server/Client (RFC 2131)
- IP Multicast - IGMP Proxy/Snooping
- Virtual Server/Port Forwarding
- DMZ

### USB Host Features

- 3G/4G USB Modem backup/Failover\*
- USB Storage File Sharing (Samba)

### FIREWALL/ACCESS SECURITY

- Built-in NAT firewall
- Stateful Packet Inspection (SPI)
- DoS attacks prevention
- Intrusion Detection System

### VIRTUAL PRIVATE NETWORK (VPN)

- PPTP/L2TP/IPSec pass-through

### POWER INPUT

- DC 12V 1.5A external power adapter

### DIMENSIONS (L x W x H)

- 199 x59 x285mm

### WEIGHT

- 480g

### OPERATING TEMPERATURE

- 0 to 40 °C (32 to 147 °F)

### OPERATING HUMIDITY

- 5% to 95% (Non-condensing)

### CERTIFICATION

- CE
- FCC
- ITU-T

### EIRP

- 2.4G (20 dBm)
- 5G (23 dBm)

### BAND SUPPORT

- 2400 MHz to 2500 MHz
- 5150 MHz to 5350 MHz
- 5470 MHz to 5650 MHz
- 5725 MHz to 5875 MHz

\*For 3G/4G dongle compatibility list, please check D-Link website for more info

\*\*Data rates are theoretical. Data transfer rate depends on network capacity and signal strength.